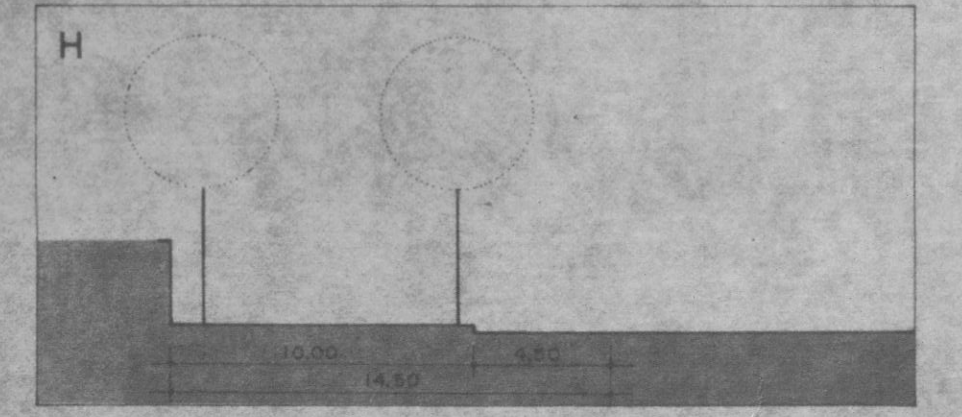
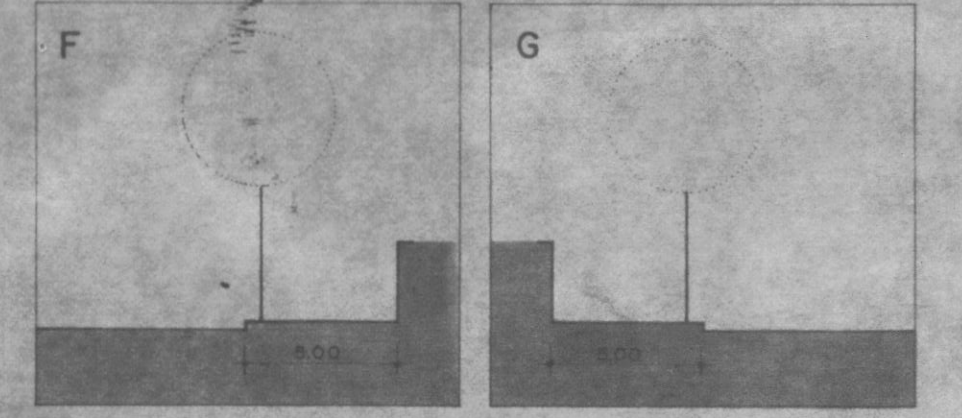
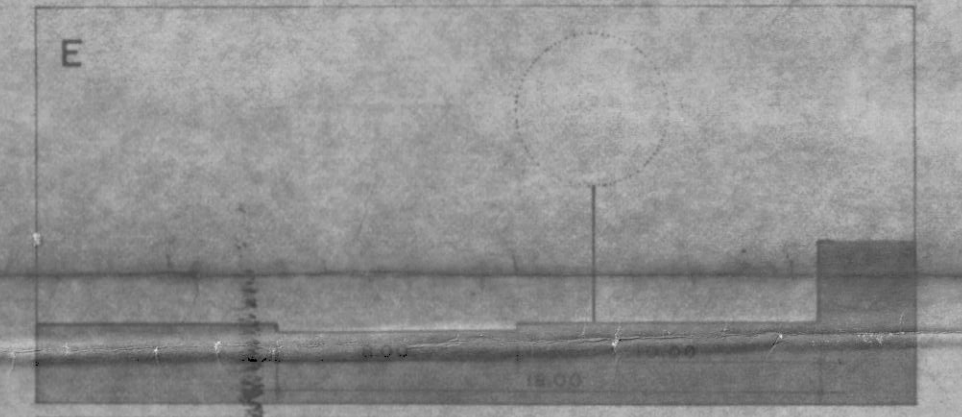
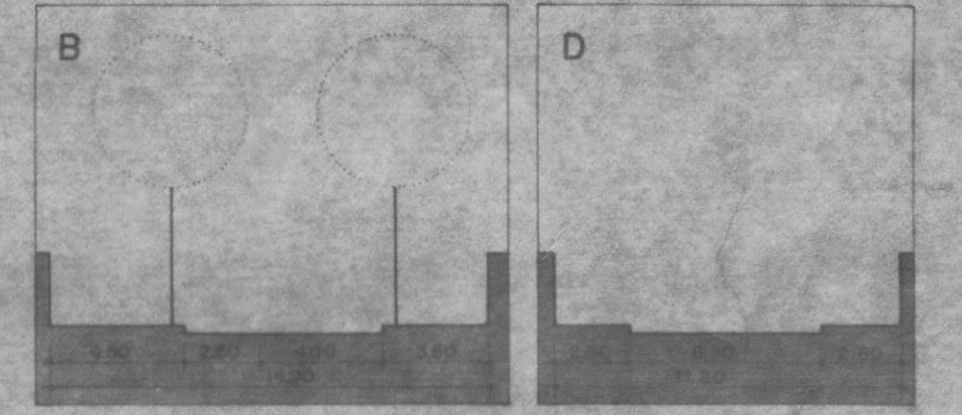
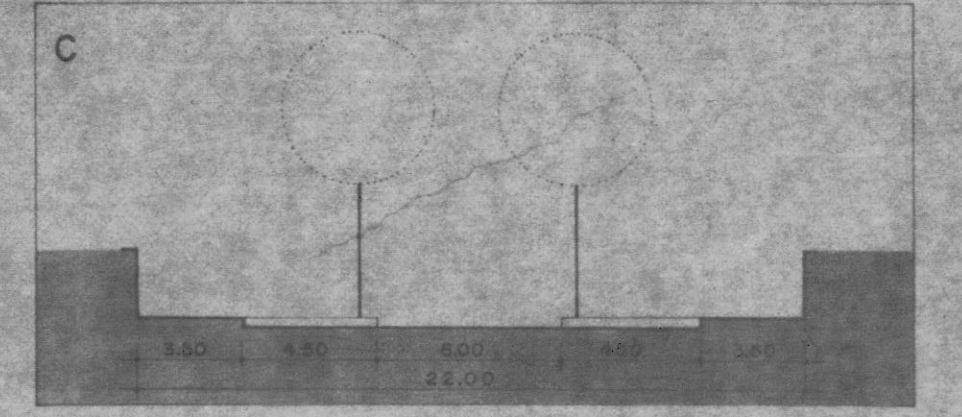
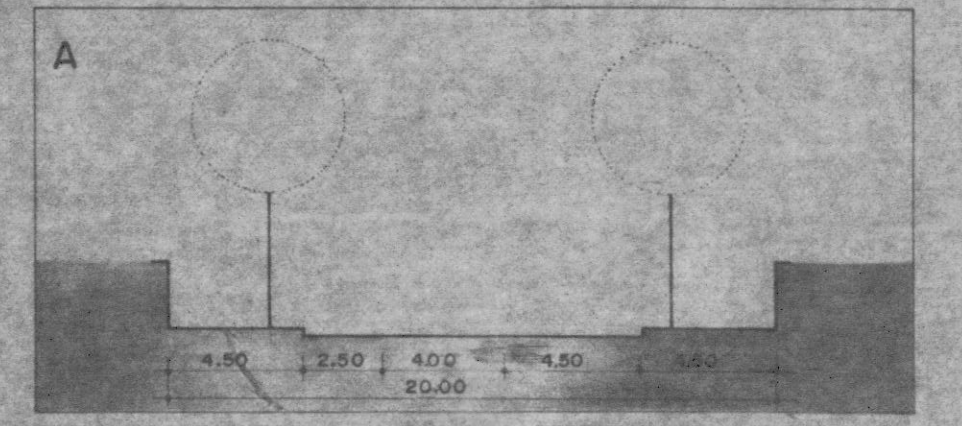
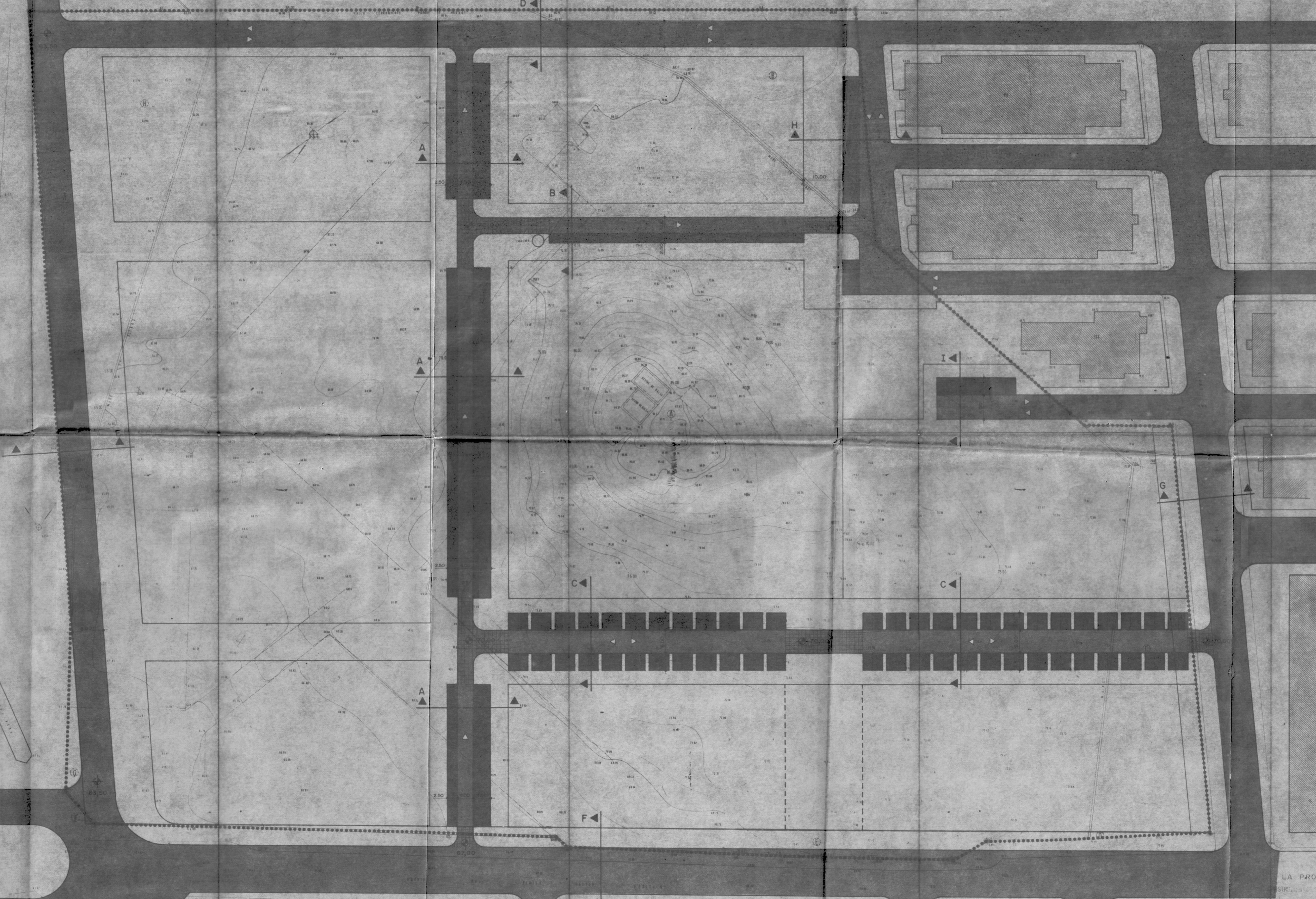


RED VIARIA PARQUEAMIENTO CHAPLAN

SUPERFICIE RED VIARIA Y APARCAMIENTO — 6.442 m²
 NUMERO DE PLAZAS APARCAMIENTO — 217
 LIMITE P.E.R.I. —



Excmo. Ayuntamiento Pleno
 29 ABR 1988
 (Firma y sello)

SECCIONES E-1/250

MAYO/87 1/500

PROMOTOR
 CONSTRUCCIONES SAN LEONARDO S. A.
 PLAN ESPECIAL DE REFORMA INTERIOR
 ZONA FABRICA DE OJAS

- ALICANTE -

LOS ARQUITECTOS

PROYECTO

11

RED VIARIA

E. ENCAÑO - J. GRAS ARQUITECTOS

LA PROPIEDAD